

Love for Sale

Drums

by Cole Porter

arr: Fredrik Olofsson 1995

Medium Swing

sim. ad lib.

Dr.

mf

10

mp

26

mf

42

43

50

f

57

58

mf

64

76

(trp.solo)

71

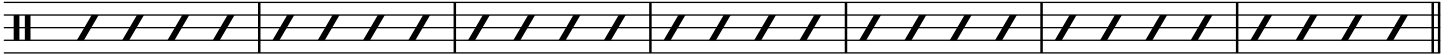
mp

79

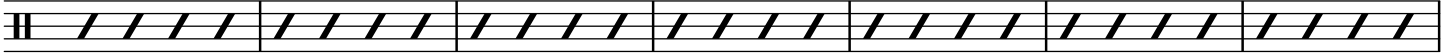
86

92

93

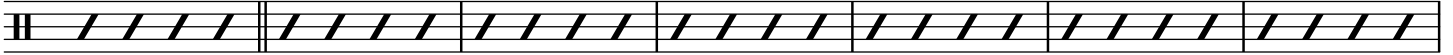


100

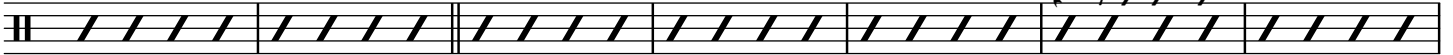


107

108



114

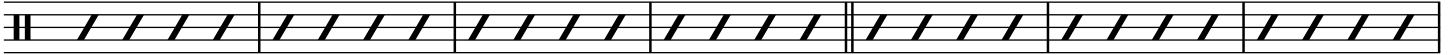


121

124



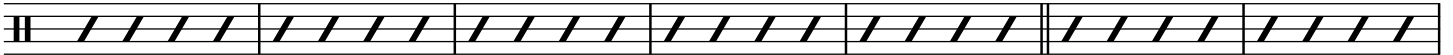
128



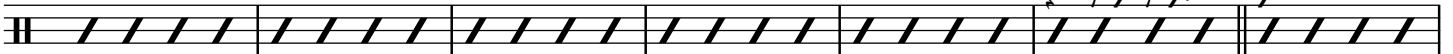
135

(sxs)

140

*mf*

142

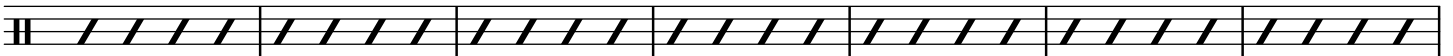
*f*

149

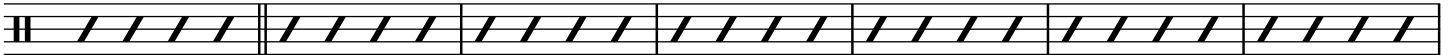


156

156

*mf*

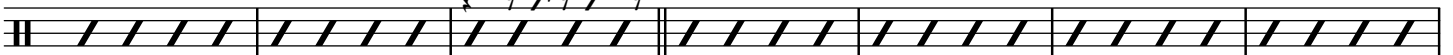
163



172

*f*

177



188

*ff*

191 *fill_ - -* *d.* *j* *fill_ - -* *fill_ - -*

198  SOLO AD LIB. (in time) 204

205 (end solo)

212

sim. ad lib.

mp

219

227

228

mf

235

The musical score for Example 235 consists of a single staff with a treble clef. The notation includes a series of eighth notes, some of which are beamed together. There are two measures with a double bar line. Above the staff, there are several accents (^) and slurs (curved lines) indicating phrasing. The notes are primarily eighth notes, with some beamed eighth notes and a few quarter notes.

The musical score for 'The Rose Tree' is presented on a single staff. It begins with a treble clef and a key signature of one flat (B-flat). The tempo is marked 'Allegretto' and the time signature is 3/4. The score is divided into two systems. The first system contains measures 1 through 10, with a repeat sign at the end. The second system contains measures 11 through 18. Dynamics include *mp* (mezzo-piano) and *mf* (mezzo-forte). The piece concludes with a double bar line and a repeat sign.

251 

267

OPEN REPEAT

267

OPEN REPEAT

(1x only)

274 **ON CUE:**

